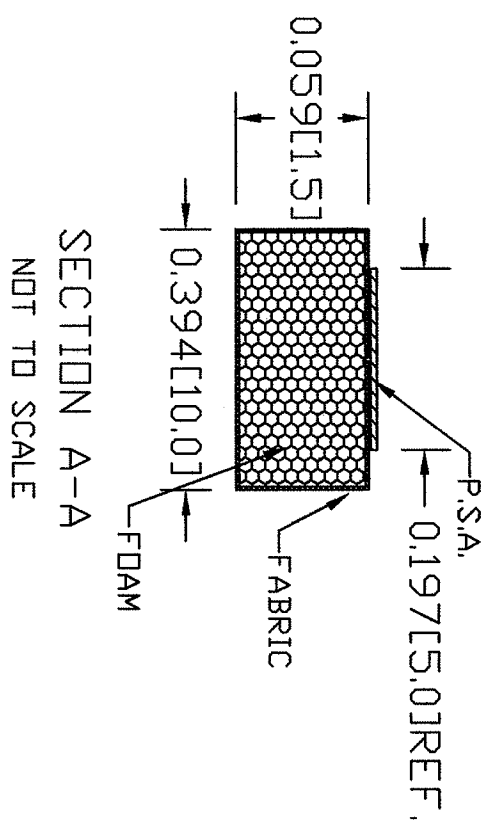
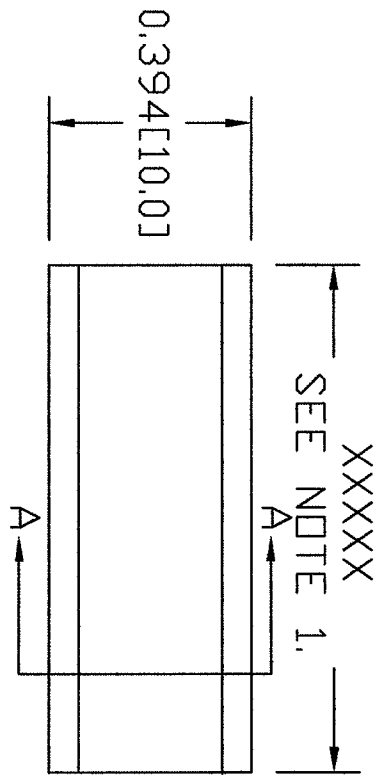


THIS DRAWING AND INFORMATION CONTAINED HEREON ARE THE PROPERTY OF CHOMERICS, AND MUST NOT BE COPIED OR DISCLOSED EITHER WHOLLY OR IN PART WITHOUT WRITTEN PERMISSION OF CHOMERICS.

This design/proposal is provided subject to Chomerics' Offer of Sales Terms and Conditions, which are available on line at www.chomerics.com/salesterms/ or can be provided by your Chomerics representative.

ECN NO.	REV	REVISION	BY	ENG.	DATE
---------	-----	----------	----	------	------



NOTE:

1. UNLESS SPECIFIED CHOMERICS STANDARD CUT TO LENGTH TOLERANCES APPLY.
2. UNLESS SPECIFIED PRESSURE SENSITIVE ADHESIVE (P.S.A.) TO BE 3M 950 OR EQUIVALENT.
3. SEE CHOMERICS SS3500 TECHNICAL DATA SHEET FOR PRODUCT SPECIFICATIONS.

UNLESS OTHERWISE SPECIFIED, ALL DIMENSIONS ARE IN INCHES (MILLIMETERS).

DO NOT SCALE PRINT
TOLERANCES UNLESS SPECIFIED FRACTIONAL
2 DIGIT DECIMAL ± .05
3 DIGIT DECIMAL ± .020
ANGULAR .5°

TITLE	<p>CHOMERICS A DIVISION OF PARKER HANNIFIN</p> <p>COMPUTER GENERATED DRAWING DO NOT MAKE MANUAL CHANGES</p>
PART DRAWING	

SCALE	NONE
SUPERSEDES	
DRAWN BY	W.A.R. 2/3/03
APPROVAL	
APPROVAL	

DRAWING NO.	77-XX-3426-XXXXXX
-------------	-------------------

CUSTOMER NAME:
TOOLING: